

# Dreams Welcome Week

WEDNESDAY, NOVEMBER 11, 2020

**HOMEgrown Challenge Grants – Why, How, NOW!**



# Virtual + Etiquette = Vetiquette

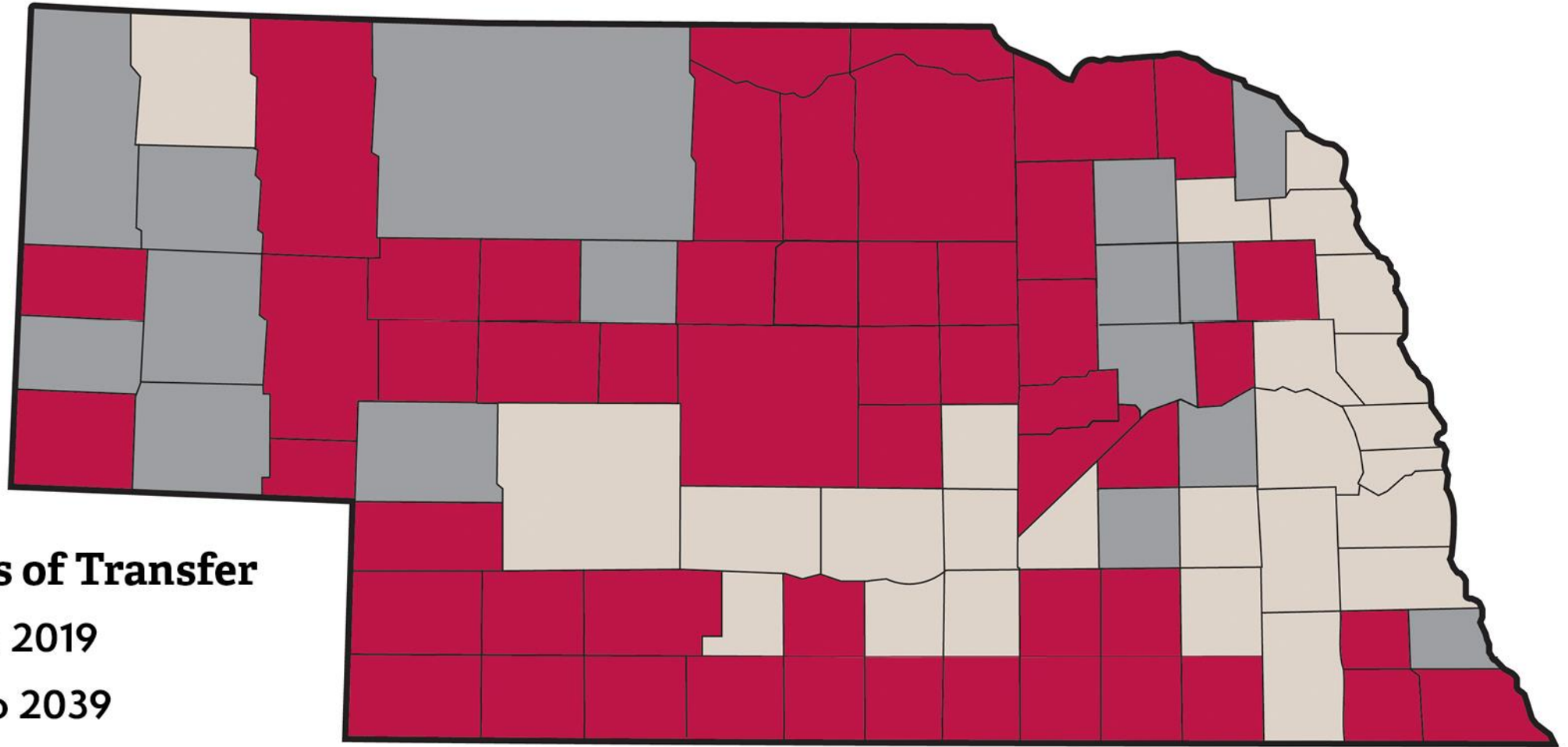
- When you begin talking, announce yourself: "This is Janice . . ."
- When you stop talking, say: "I'm complete."
- Mute your microphone while you are not talking.
- Remain on camera if possible.
- Remain available to be on microphone.
- If you have a question, raise your hand (click on Participants) or type into the chat box.



Nebraska is blessed  
with  
*Abundance.*

Everything we need is *right where we are.*  
Everything and everyone *works.*

# COUNTY BASED TRANSFER OF WEALTH



## Peak Years of Transfer

- 2010 to 2019
- 2020 to 2039
- 2040 and after



# Community Endowment Building

	2010	2015	2020
Community-focused funds building endowments	86	123	143
Endowment assets (million \$)	\$24	\$55	\$97
Planned gifts to grow endowments (million \$)	\$26	\$34	\$33
<b>Endowments + expectancies</b> (million \$)	<b>\$50</b>	<b>\$88</b>	<b>\$130</b>

# Unrestricted Endowment for Community-Based Affiliated Funds

	2012	2015	2020
CBAFs with an unrestricted endowment	63	72	78
CBAF unrestricted endowments (million \$)	<b>\$12</b>	<b>\$22</b>	<b>\$51</b>
CBAFs with \$10,000+ payout	<b>16</b>	<b>36</b>	<b>44</b>
CBAFs with \$50,000+ payout	<b>2</b>	<b>4</b>	<b>12</b>

# Community Unrestricted Endowments Catalyzed by a Challenge Grant

Affiliated Fund	2010 Population	Unrestricted Endowment	Annual Payout
Keith County	8,368	\$10,148,687	\$456,691
McCook	7,698	\$3,431,414	\$154,414
Shickley	341	\$1,854,210	\$83,439
Boone County	5,505	\$1,665,377	\$74,942
Butler County	8,395	\$1,584,077	\$71,283

# Community Unrestricted Endowments Catalyzed by a Challenge Grant

Affiliated Fund	2010 Population	Unrestricted Endowment	Annual Payout
Pender/Thurston	1,134	\$1,483,987	\$66,779
Brown County	3,145	\$1,413,192	\$63,594
Imperial	2,071	\$1,178,701	\$53,042
Nebraska City	7,289	\$1,111,194	\$50,004
Norfolk	24,210	\$1,052,554	\$47,365
Stuart	590	\$950,490	\$42,772

# Community Unrestricted Endowments Catalyzed by a Challenge Grant

Affiliated Fund	2010 Population	Unrestricted Endowment	Annual Payout
Diller	260	\$847,682	\$38,146
Howells	561	\$805,319	\$36,239
Bertrand	750	\$537,246	\$24,176
Perkins County	2,970	\$495,024	\$22,276
Theford	647	\$387,786	\$17,450

# Community-Focused Unrestricted Endowment

- For development, not relief
- Discretionary capital
- Margin of excellence
- Create space to envision new possibilities
- Local leaders make a case for investing locally

# Unrestricted Endowment Growth in McCook

## HARPST CHALLENGE

2007–2008  
Raise: \$75,000  
Receive: \$25,000

## SHERWOOD CHALLENGE

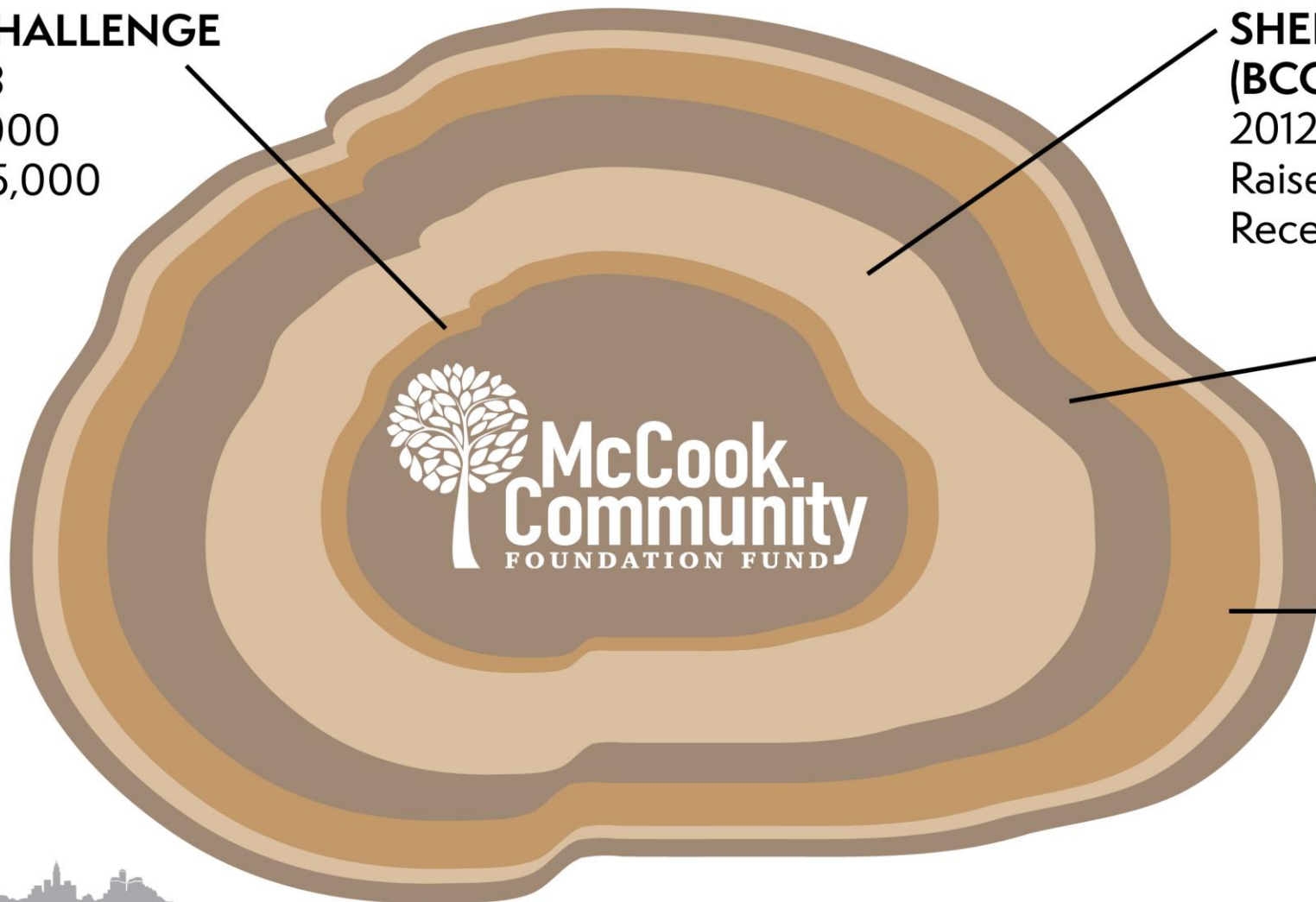
(BCC Round 1)  
2012–2015  
Raise: \$500,000  
Receive: \$250,000

## MEYERS CHALLENGE

2014–2016  
Raise: \$180,000  
Receive: \$90,000

## SEHNERT CHALLENGE

2018–2021  
Raise: \$400,000  
Receive: \$200,000



**2020 Unrestricted Endowment Total: \$3,431,414**

# Campaign Characteristics

- WHO - identify a Challenge Grant donor ?
- WHAT – is the Challenge amount (\$100,000 ?)
- WHEN – is the timeline (1 -3 years ?)
- WHERE – your community!
- WHY – to build your fund’s unrestricted endowment and “tell your story”

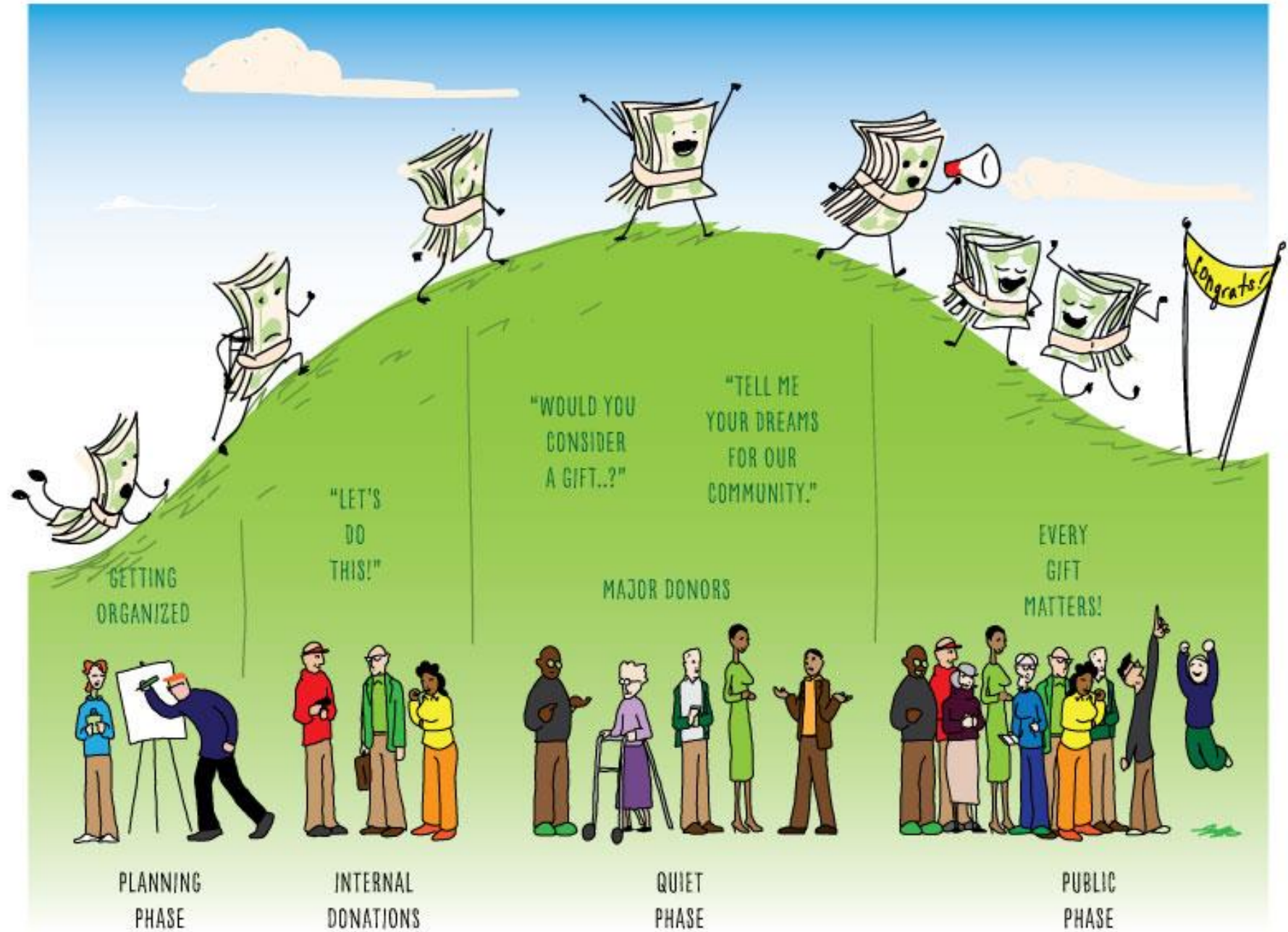
## NCF staff assistance for:

- Campaign design
- Creating campaign materials

## NCF Training for FAC & campaign volunteers:

- Campaign Basics
- Make the Ask

## NCF Peer Mentor network



# **Dream Big Breakout**

**What has inspired YOU today to do  
a HOMEgrown Challenge Grant?**

**&**

**Share your WHY**

**if you are already participating!**



**Join us for more training!**  
**[www.nbcmmfound.org/celebrate](http://www.nbcmmfound.org/celebrate)**



CELEBRATE WITH US!

*Dreams Welcome*

*Thursday, November 12 | 6:30–7:45 PM*  
**NCF Annual Celebration Livestream!**

